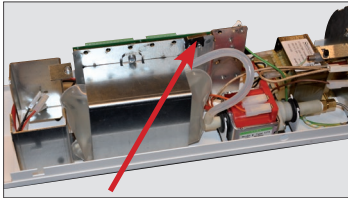




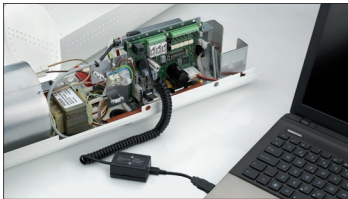
Check fluid level

Visual check of the fluid level is of most importance.



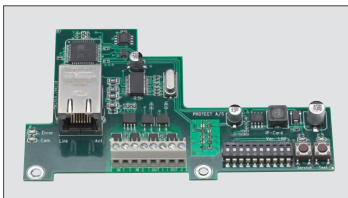
Check the tamper switches

Visual inspection of the tamper switch on a QUMULUS model.



IntelliSuite tells you everything

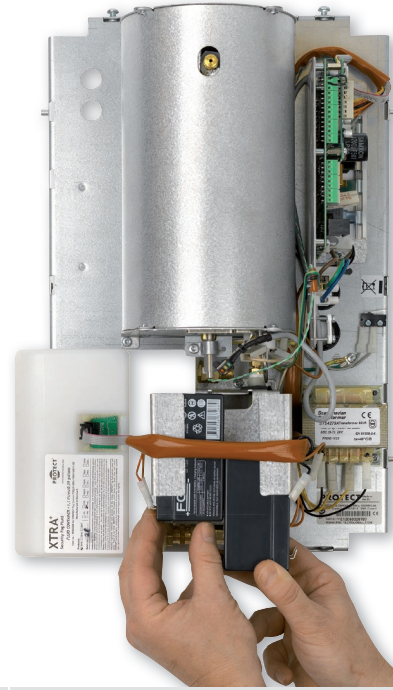
With the IntelliConnector cable and IntelliSuite software on the laptop it's much easier and quicker to service a PROTECT Fog Cannon. Retrieve both real-time information and legacy data - this can be used as the documentation for completed service (PDF).



Service check at a distance with IPCard

Is the fog cannon connected to the Internet via the PROTECT IPCard, and do you have IntelliSuite on your laptop, it's possible partly to make a service check without being present at the installation address.

We recommend a service check once a year



Recommendations for a service check:

- Make sure the alarm is Disarmed
- Visual inspection outside for any tampering attempt
- Especially check the nozzle to discover any attempt to block the output
- Be aware if the tamper switch internally is connected to the alarm system tamper loop, and if so, remember to put the alarm in service mode
- Take off the metal casing
- Visual inspection of the fog cannon overall - does it look as it should?
- Visual inspection of the tamper switches
- Visual inspection of the fluid container - visual level check. Fluid durability: Max. 2 years
- Visual inspection of the wires connected to the fluid container, the batteries and the pump
- Visual inspection of the PCB, is it working? Is the LED display changing normally?
- Check the PCB for error messages
- Check the PCB display for the input signals, Arm, Disable, Primary and Secondary; represented by the letters d, A, P and S
- Make sure that the PCB display reads "bAt" thereby recognizing the presence of batteries
- If no E4, E5 and E6 error messages, the batteries are ok. Check the battery condition and the date (if they are more than 2 years old they must be replaced)
- Check the dipswitch setting for dipswitch 2-3-4 - they must not be in the position OFF-OFF-OFF
- If possible activate the alarm, thereby testing the 'Disable/Disarm' and the 'Primary signal' feeding to the fog cannon
- With the alarm active, activate the secondary/verifying PIR sensor, which should activate the fog cannon
- Stop the alarm and thereby stop the fog cannon
- If all is working, the fog cannon is ok
- Replace the original casing back in position



Contact technical hotline

Call technical hotline if you have questions about service check.



Technical course for you

Sign up for a technical course. Contact us for more information.



SECURED IN SECONDS