

PROTECTGLOBAL.COM

INSTALLATION GUIDE FOR HIDDEN AND LOWERED FOG CANNON

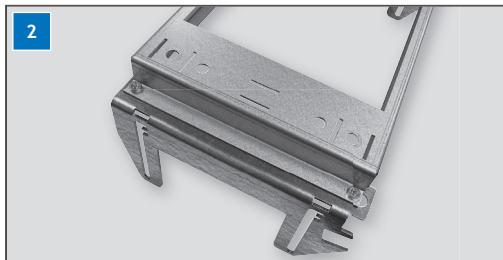
PROTECT 400/700/600/1100/2200/600i/1100i/2200i



SECURED IN SECONDS



The cuts in the metal plate can be used to e.g. threaded rod (M10), metal straps or steel cables (not included).



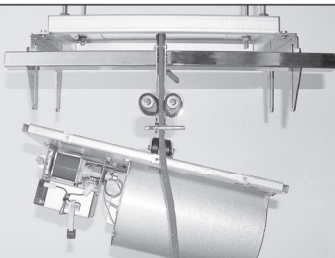
Fasten the fog cannon's mounting brackets to the metal plate. Mounting brackets and screws are delivered with the fog cannon.

3



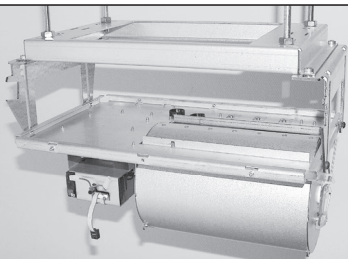
Now mount the metal plate to the fixed/upper ceiling or rafter with e.g. threaded rod (M10), metal straps or steel cables (not included).

4



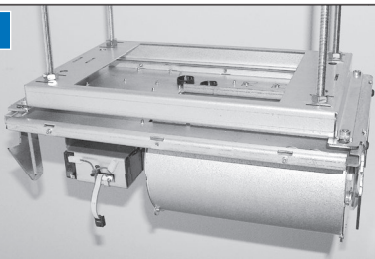
When the metal plate is firmly fixed, the fog cannon can be mounted in the two mounting brackets. We recommend our hoist tool to lift the unit from the ground (accessory).

5



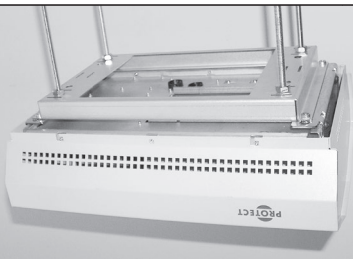
The hoist tool has been removed and there is enough space for connecting the power and signal cables.

6



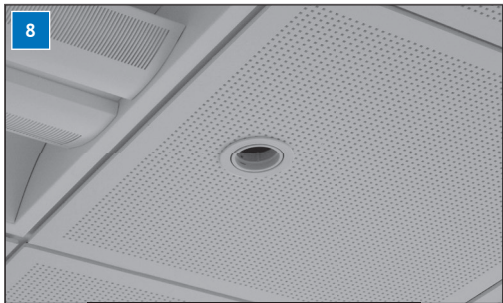
Finally the fog cannon is pushed to the metal plate and the screws can be tightened firmly.

7



The fog cannon can be mounted visible or hidden.

8



Hidden installations requires the fog cannon to hang 2 cm from a lowered ceiling.



It is the installer's responsibility to ensure that the unit is fastened safely and securely to the fixed/upper ceiling or the rafters or similar.

INFO

Visit [PROTECTGLOBAL.COM](https://www.protectglobal.com) to find information about the distributor in your country.

PROTECT A/S

Hasselager Centervej 5 · DK-8260 Viby J · Tel.: (+45) 86 72 18 81
info@protectglobal.com · [protectglobal.com](https://www.protectglobal.com)