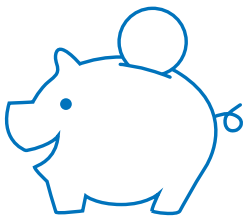


IntelliBox™

IntelliBox is an intelligent control unit between the alarm system and more fog cannon units. The box helps to facilitate monitoring and servicing of the system centrally. Get IntelliBox in two different versions: USB and IP.



Save time and money

PROTECT IntelliBox cuts costs and facilitates easy installation and service on the fog cannon installations.



Wireless security fog

Connected to the Internet, the IP-version of PROTECT IntelliBox turns into a remote controlled box for monitoring and servicing purposes - as if you were standing next to the fog cannon installation.



Access all fog cannon units with IntelliBox

With IntelliSuite software on the computer and the IntelliConnector cable, you can access fog cannon units in the installation via IntelliBox (USB-version).

Features:

- Control unit for easier installation and service - and for wireless control
- Unique device that collects all signals between the alarm system and up to 16 fog cannon units in one unit and with one interface for the control centers
- Easy and fast to connect/disconnect fog cannon units to/from the alarm system
- View current status and error messages clearly on a log system display
- Cabled or wireless solutions (or mixed) between the fog cannon units themselves and between the fog cannon units and the IntelliBox - especially relevant in houses where draw cables will not be appreciated
- Used in installations where separate units are released manually for robbery and assault situations ("panic button" solution)
- The extra in- and output can also be used for signaling of power cut
- With the IP version of IntelliBox you get access to the fog cannon installation via IP/ internet. You can monitor the installation as if you were present. It is especially relevant when installations are high up, and at considerable distances apart
- Suits all PROTECT Fog Cannon units (except Xtratus)
- Information is transmitted from the IntelliBox to the alarm technician's PC using IntelliSuite software so that all information can be monitored (either with the IntelliConnector cable or IP/remote)
- Accessories for IntelliBox: IntelliBusCard and IntelliWirelessCard

See technical specifications on the next page.



SECURED IN SECONDS

Specifications:

IntelliWirelessCard (wireless connection unit)
 IntelliBusCard (for installation in each fog cannon)
 IntelliBox (smart display providing access to the fog cannon units)

Simple "Plug & Play" setup and connection between the fog cannon units and the IntelliBox. Push only one button to include a fog cannon

Fog release in up to 3 different zones possible - controlled by separate inputs on the IntelliBox

Fog release on selected fog cannon units in panic situations like robberies and attacks - regardless of the status of the alarm system and the fog cannon

Connection with the fire alarm system possible

Checking the status of the antenna conditions possible via the display and IntelliSuite (wireless systems)

Encrypted communication for both wireless connections and connections with cables

Logs and status on each fog cannon are available via IntelliSuite connected to the IntelliBox

Allocation of names or codes available/possible for each fog cannon via IntelliSuite

Different functionalities for AUX outputs and AUX input

USB interface for communication, remote monitoring, error correction etc. (e.g. monitoring and servicing)

IP-connection for remote communication via the internet/IntelliSuite wherever in the world the alarm installer is:

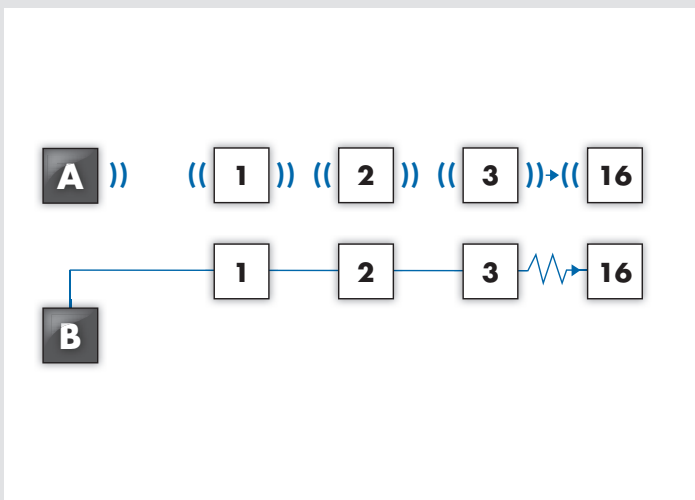
- Remote debugging and analysing of working state and faulty conditions
- Remote setup and control of the IntelliBox
- Remote test fire on any fog cannon connected to the IntelliBox
- Remote software update

Changing the setup is possible via IntelliSuite. IntelliSuite reports technical information about each fog cannon included in the system (requires a password is of the technician)

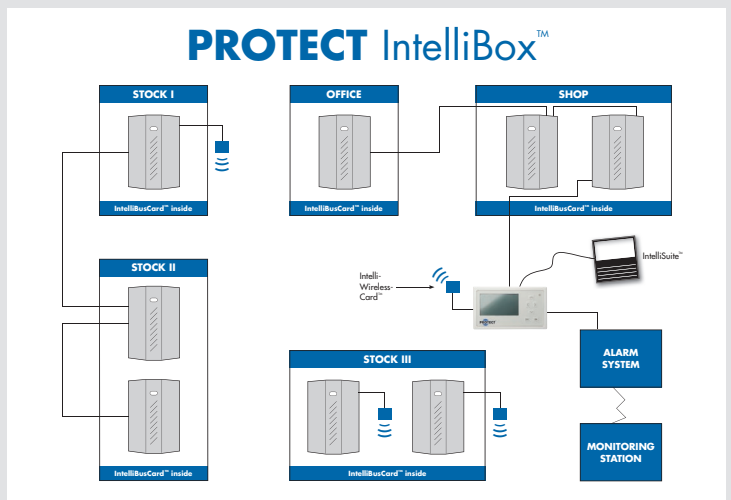
Log information in IntelliBox includes time settings and dates. The latest 10 fault messages are available

Password-protected "technician mode"

Printing errors excepted. Subject to changes to technical data.



Each IntelliBox can control up to 16 fog cannon units. Depending on the security class required, you either choose a wireless connection (A) or a cabled connection (B) - or a combination.



See examples of three different ways of connecting several fog cannon units on the back, all using an IntelliBox controller.



SECURED IN SECONDS